



WINTER/SPRING 2026

NEWSCASTING

Grounds For Sculpture's publication for members and volunteers

Upcoming Collection-
Focused Exhibition

Meet the Staff of GFS
& Johnson Atelier

Horticultural Research
Project with Bartlett

Philly Touch Tour Training

Artwork by
Volunteers & Docents

Member Events

... and more!

JANUARY | FEBRUARY | MARCH | APRIL

WELCOME

Dear Members,

As we begin a new year at Grounds For Sculpture, we pause to honor the life and legacy of Cecelia Joyce Johnson, who passed away on September 30, 2025, at the age of 91. Cecelia was a gifted writer, producer, and passionate supporter of the arts. As the beloved wife of our late founder, Seward Johnson, her encouragement and belief in his artistic ability was instrumental in his rise to success as an artist and entrepreneur. Her creativity, quiet strength, discerning spirit, and sharp wit will be deeply missed.

We invite you to visit (or revisit) the Cecelia Joyce and Seward Johnson Gallery, where Cecelia's influence and the Johnson family's enduring contributions to the arts are beautifully celebrated. It's a space that reflects the heart of our mission and the creative energy she helped nurture.

I also want to extend my heartfelt thanks to all of you who supported our 2025 Annual Fund campaign. Your generosity and belief in our theme—“building a chain reaction of good”—have been deeply encouraging. At a time when creative freedom and togetherness are more vital than ever, your support helps us continue to grow that ripple effect, nurturing a vibrant, inclusive arts community.

Though this issue reaches you in the chill of January, we're already looking ahead to a spring season rich with exhibitions, events, and programs designed to keep your heart and mind warm. Whether you're seeking inspiration, learning, or simply a moment of peace, GFS has something special in store for you.

With gratitude,


Gary Garrido Schneider
Executive Director



HOURS THIS SEASON

General Hours | 10AM - 5PM | Wednesday – Monday | Closed Tuesdays

Members may visit spontaneously without a reservation on weekdays. A free reservation is required on weekends and holidays to ensure your desired entry time.

RESERVE YOUR VISIT: groundsforsculpture.org/timed-admission-tickets

As an organization, Grounds For Sculpture has made positive strides towards accessibility and accommodations. From June-December 2024, we participated in Art-Reach's Accessibility Task Force pilot program to audit our policies, practices, procedures, and programs to determine improvements for equitable engagement and access for people with disabilities. The result is a three-year Strategic Accessibility Plan that will advise us on our work going forward. Check this space for updates!

The Access Mobile Tour is a 45-minute tour that is available daily for visitors with disabilities or limited mobility. The cart can accommodate either a maximum of five people OR four people and a wheelchair. Tours are scheduled at 11AM, 12PM, 2PM, and 3PM. You can reserve seats for the guest who needs it + one additional guest (additional guests may join the tour to the guides discretion). Reservations strongly recommended two weeks in advance by calling 609.586.0616.

Touch Tours are available for groups with individuals who are blind or have low vision. These docent-led experiences engage participants with a variety of outdoor sculptures that can be explored tactilely. **ASL tours** are available for groups with individuals who are d/Deaf. Tours require advance notice of, at minimum, 2 weeks' notice. For more information or to arrange a tour, please contact us at access@groundsforsculpture.org.

Docent Tours are available based on docent availability. Check in at the Welcome Center to see what pop-up tours are available during your visit!

Discover something new or learn more about a longtime favorite!

Explore our collection of 400+ works on our [website](#) and our [interactive map](#), which features sculpture and horticulture throughout the art-filled gardens, as well as an [audio tour](#) offering docent interpretations of 29 sculptures and two historical spots. View our [tool box](#) with new self-guided activities to enhance your next visit.

Currently on View! Learn more about *Salvador Jiménez-Flores: Raices & Resistencias* through our audio guides [here](#).

MAKE THE MOST OF YOUR MEMBERSHIP Register on the GFS website. Registering your membership's online account allows you to “Sign in” to conveniently reserve your free visits, renew, register for programs, and receive your member discounts where applicable! **If you have not already done so, register your membership's online account [here](#).**

[SIGN UP FOR GFS E-NEWS](#)

CONNECT WITH GFS!
[@GROUNDSFORSCULPTURE](#)



Cover photo: Isaac Witkin, *Garden State*, 1997, Zimbabwe black granite, 188 x 133 x 115 inches, Grounds For Sculpture, Gift of The Seward Johnson Atelier © Estate of Isaac Witkin; John Newman, *Skyhook*, 1998, steel, stone, epoxy foam, epoxy resin, cable, wood, paint, 240 x 300 x 156 inches, Grounds For Sculpture, Gift of The Seward Johnson Atelier © Artist or Artist's Estate; Monet Bridge at Grounds For Sculpture; photos: David Michael Howarth



Karen Petersen, *The Listener*, 1997, bronze, 59 x 42 x 40 inches, Grounds For Sculpture, Gift of The Seward Johnson Atelier © Artist or Artist's Estate; Mike Gyampo, *Just Chillin'*, 1996, concrete, marble, 78 1/2 x 51 1/2 x 56 inches, Grounds For Sculpture, Gift of The Seward Johnson Atelier © Artist or Artist's Estate; photo: David Michael Howarth Photography

MEMBER EVENTS

For more information or to register for these events, visit groundsforsculpture.org/calendar or call 609.586.0616



FAMILY OPEN STUDIOS

First Saturday of each month (11am-3pm)

Saturday, February 7: Stained Glass Stories
Saturday, March 7: Woven Words
Saturday, April 4: Paper Garden

This drop-in workshop invites all ages to create together. FREE for members.



CREATIVE KIDDOS

Second Saturday of each month (10:30-11:45am)

Saturday, February 14: Huggable Heart Pillows
Saturday, March 14: Bead By Bead
Saturday, April 11: Light The Way

New! Join us for a fun, active story time and brief tour of the gardens, then participate in an art making activity inspired by the book. These workshops encourage creativity and fine motor skills, while making something special to take home. Designed for kids ages 6 to 8 working alongside their adult caregivers. \$10 materials fee per child; FREE for adult members.



TOTS FOR SCULPTURE

On a select Saturday each month (10:30-11:45am)

Saturday, February 21: Sunny Butterflies
Saturday, March 21: Skewer Sculptures
Saturday, April 25: Flying Colors

Tots For Sculpture workshops are designed for kids ages 3-5 working alongside their adult caregivers. \$5 materials fee per child; FREE for adult members.



PEACOCKS & PJS

Saturday, February 28 + March 28 (11am-3pm)

Dress in your comfiest pajamas and enjoy a reading of *Can You Dance Like a Peacock?* by Rekha S. Rajan and a dance party with

Perry the Peacock. Then, head over to the SmartCart to learn interesting facts and create your own colorful peacock to take home. This program is designed for families of all ages to learn, dance, and create together! FREE for members.

LEARN ABOUT THESE EVENTS AND MORE

Children's educational programming at Grounds For Sculpture is made possible by generous support from the Jirair S. and Elizabeth Hovnanian Family Foundation. Additional support is provided by Knowledge Without Borders and PNC Foundation. Support is provided, in part, by Jenifer Morack, and Schaeder/Batterman Family Fund of the Princeton Area Community Foundation.



MEMBERS' CANDLELIGHT CHAIR YOGA + INTENTION SETTING

Wednesday, January 7, 2026 (5:30-7pm)

Embrace the new year with focused, mindful breathing and the practice of intention setting. From beginners to seasoned yogis, all are welcome to join us for curated yoga flow and a guided intention setting activity sealed with an essential oil blessing, all while we are surrounded by the beauty of twinkling candlelight and exclusive activation of the captivating sculpture *Altar II* by artist Michele Oka Doner. [REGISTER NOW](#)

MEMBER MINGLE + "PRIVATE GARDENS OF PHILADELPHIA" TALK

Saturday, February 21, 2026

Member Mingle from 12:30-1:30pm in the Member Lounge

Join us for a member-exclusive social with cookies and warm beverages in the cozy Member Lounge before the main event. The Member Mingle is included with member registration for the talk.

"Private Gardens" Talk from 1:30-3pm in the Auditorium

Join us for an engaging panel discussion featuring author and horticulturalist Nicole Juday and Philadelphia Horticulture Society Vice President and horticulturist Andrew Bunting as they explore the inspiration, artistry, and horticultural richness behind the book *Private Gardens of Philadelphia*.

[REGISTER NOW](#)



MEMBER TRIP TO PHILADELPHIA FLOWER SHOW

Wednesday, March 4, 2026 (10am-5:45pm)

Explore the Philadelphia Flower Show 2026, America's largest flower show, showcasing large-scale floral creations and gardens created by the most talented florists and garden artists from Philadelphia and around the world. This members-only trip is open to current and new GFS members. *Limited space!* Members-only price \$85, includes round-trip coach transportation and admission to the Flower Show. [REGISTER NOW](#)

Family Open Studios, Tots for Sculpture, Creative Kiddos photo: Roshni Khatri; Peacocks & PJs photo: David Michael Howarth; Flower Show photo: Becca Matthias



SPRING ARTISAN MARKET

Saturday, March 21, 2026 (9am-5pm) + Sunday, March 22, 2026 (9am-4pm)

GFS is back with a fresh, new curated shopping experience. Discover talented local artisans and take advantage of Members-Only hours from 9-10AM. FREE for members.

FEMALE SCULPTORS TOUR – PART 2!

Saturday, March 28, 2026 (10:30am)

Bundle up and join us for a Members-Only docent-led tour about the female sculptors showcased at GFS to celebrate Women's History Month. Register at Guest Services upon arrival to GFS. Tour leaves from the Welcome Center, takes place outdoors, and lasts 45-60 minutes.



GARDEN RETREAT

Saturday, April 18, 2026 (9am-12:30pm)

Step away from the everyday and immerse yourself in a morning of peace, creativity, and connection.

This year, we're thrilled to introduce **new offerings** like *Creative Rest* and *Reset* and *Art Therapy Vision Boards*, alongside returning favorites. Each session is thoughtfully led by expert instructors dedicated to helping you find balance and inspiration in nature's beauty.

SWIRL: AN EVENING OF ART AND WINE

Friday, April 24, 2026

Art, cuisine, and exploration will collide again at our special fundraiser, *Swirl*, as it officially returns for its 4th year! Returning fans of *Swirl* and newcomers alike can look forward to another spring evening full of wine tastings paired with premium culinary bites curated by the chef and sommelier at Rat's Restaurant, while learning about iconic sculptures throughout the art-filled gardens. All funds raised from this event support GFS's impressive sculpture collection, sprawling gardens, and dynamic public programming.

Swirl is supported, in part, by Capital Health Systems and Charles Schwab. Additional support provided by A-1 Tours, a division of A-1 Limousine, Donna M. Murray SA Fox & Roach Realtors, Greencrown Energy, Mrs. G Appliances, Princeton Marriott at Forrestal, and TD Bank.



DONNA M. MURRAY
Sales Associate, REALTOR®
BERKSHIRE HATHAWAY
FOX & ROACH
REALTORS®



Spring Artisan Market photo: Andrej Likasov; Garden Retreat Image: Dina Wind, *Harp of David #1*, 1985/2018, mild steel, 26 x 24 x 22 feet, Grounds For Sculpture, Gift of the Dina Wind Art Foundation, © Artist or Artist's Estate; photo: David Michael Howarth; *From Our Grounds to Yours* photo: David Michael Howarth



FROM OUR GROUNDS TO YOURS – GFS'S ANNUAL PLANT SALE

Saturday, May 2, 2026 (Members-Only 10AM-12PM, Open to Public 12-4PM)

Sunday, May 3, 2026 (Open to Public 10AM-2PM)

Now in its seventh year, the GFS Annual Plant Sale is a popular fundraiser that supports our horticulture program. The sale features a unique selection of annuals, perennials, and shrubs, as well as a variety of GFS propagated trees, houseplants, and succulent gardens. Our Director of Horticulture, horticulture team, and volunteers will be on hand during the sale to answer questions and share garden-planning advice. On May 2, members enjoy first access to the selection and horticulture staff will offer a gardening demo. This event is rain or shine. Bring your wagon!

MEMBER PREVIEW DAY

Saturday, May 16, 2026

Save the date for a member-exclusive opportunity to explore behind the scenes of the new artistic season. Join us and participate in a variety of unique programming specifically designed to engage and inspire you! Member Preview Day highlights include:

- Exclusive first access to the new exhibition
- Motor Exhibits Building Artists' Open Studios
- Art-making activities
- Docent-led tours

Members may use their Guest Passes to bring additional guests. Full program schedule will be announced in April.



VISIT US IN THE MEMBER LOUNGE!

Friday – Sunday (11am-2pm)

Located in a bright corner of the Welcome Center next to the Van Gogh Café and overlooking the gardens, the Member Lounge is an inviting space for members to take a break with a complimentary refreshment. Read museum publications, learn about upcoming programs, or connect with a staff member or volunteer. *Make sure to check your Member Exclusives email for drop-in programs each month!*

Interested in getting more engaged? Bringing additional family and friends with you to programs and exploring our art-filled gardens? Upgrading your membership is easy and can be done anytime during your membership's term - and you'll support the arts! Call the Membership Office at 609.249.0225 for more info.

REFLECTIONS

Member Preview Day

On September 27, members celebrated the exciting new season with an exclusive Member Preview Day. Members had first access to the new exhibition *Salvador Jiménez-Flores: Raíces & Resistencias*, and an engaging talk and tour with the artist and Gary Garrido Schneider, GFS Executive Director and curator of the exhibition. Members also enjoyed making their own succulent pots, a hands-on printmaking workshop, and guided tours of the gardens.

Salvador Jiménez-Flores: Raíces & Resistencias is made possible, in part, by the Brooke Barrie Art Fund and Hella and Scott McVay. Support is provided, in part, by The New Jersey State Council on the Arts, a division of the NJ Department of State, and a partner agency of the National Endowment for the Arts, and the Atlantic Foundation.



Made possible by funds from the New Jersey State Council on the Arts, a partner agency of the National Endowment for the Arts.



Succulent Pot Workshop



Salvador Jiménez-Flores, Artist



Printmaking Workshop

Salvador Jiménez-Flores, *La resistencia de los nopales híbridos: El Susurro del Desierto/The Resistance of the Hybrid Cacti: The Desert's Whisper*, 2025, bronze, Cor-Ten steel, H. 109 x W. 92 x D. 36 (base H. 36 x W. 72 x D. 72 inches), Collection of the Artist; Salvador Jiménez-Flores, *Memoria, Tierra, Trabajo: A Glimpse of the Semiquincentennial*, 2025, clay slip, oxides, H. 15 x W. 89 feet, Courtesy of the Artist; all photos: Hannah Yoon

Have an idea for feature in *News casting*? Email Claire Cossaboon, Director of Membership, ccossaboon@groundsforsculpture.org.

GFS Member Meet-up at Art@Bainbridge

On September 9, GFS members gathered for a Member Meet-up at Art@Bainbridge to view the exhibition *Léni Paquet-Morante: Extract/Abstract* and learn more about the artwork together with the artist. Léni is a painter, sculptor, multidisciplinary artist, and friend of GFS, who has a studio located in the Motor Exhibits Building on the GFS campus.



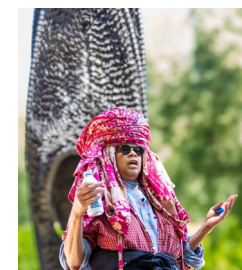
Léni with the GFS team in her exhibition



GFS Member Meet-up at Bent Iron Brewing Company

Thank you, **Bent Iron Brewing Company**, for hosting our GFS Member Meet-up on October 9!

This lovely Hamilton brewery has become a local fixture with outdoor seating, fire pits, and beautiful interior spaces as well. Nearly 50 GFS members met and mingled while enjoying tasty suds and an informative tour of the brewery with co-owner Peter C. Brittain. *Be sure to look out for our Member Exclusives emails and the GFS calendar for future Member Meet-ups coming in 2026!*



Art Talk with Chakaia Booker

GFS hosted a very special program for **Sustainer and Benefactor level members on November 16**, with internationally renowned American sculptor, **Chakaia Booker**, in conversation with **Grace Yasumura**, GFS's new Curator.

Their discussion explored background, inspiration, and artistic process. After the talk, members enjoyed a curated tasting of Chakaia's favorite cuisine and further conversation.

Léni Paquet-Morante, *Forest Floor, Water*, 2020, acrylic on canvas; Chakaia Booker, *FOC*, 2010, rubber tires, stainless steel, 30 x 8 x 8 feet, Courtesy of the Artist, photo: Eric Van't Zelfden for DMH Photography; Clifford Ward, *Ode to George 2*, 2011, plaster bandage, rice paper, melted crayon, acrylic paint, 50.5 x 19.5 x 28 inches, Collection of the Artist



Member Appreciation Day

While GFS is grateful for its members all year long, a **Member Appreciation Day** was celebrated on **November 22!** Members enjoyed discounts on holiday shopping in the Museum Shop and seasonal tastes at the Van Gogh Café. The cozy Member Lounge offered complimentary coffee, tea, hot cocoa, and cookies while members made their own holiday greeting cards. Members were delighted by an engaging Members-Only tour of *Clifford Ward: I'll Make Me A World*, led by docent Ksenia Bobylak and joined by the artist Cliff himself! In the afternoon, we hosted an opening reception for the 16th annual *Members' Musings* exhibition featuring an impressive array of creativity by fellow GFS members. *Thank you for your support of GFS!*



Have you received your GFS Member pin?

Stop by Guest Services in the Welcome Center during your next visit to receive your FREE special-edition pin when you renew your membership. It also makes a great token when gifting a GFS membership to a loved one or fellow supporter of the arts!

Your membership provides critical support for educational programs and exhibitions that enrich, surprise, and inspire so many. As a non-profit organization, Grounds For Sculpture depends on the incredible support of its members to sustain our beautiful, art-filled gardens for over 250,000 visitors each year. As always, we appreciate your generous and impactful support, and look forward to seeing you!

[RENEW OR GIFT A GFS MEMBERSHIP](#)

Bloom Watch



Snowdrops (*Galanthus* spp.)

Late Winter

One of the first flowering bulbs to make an appearance are **Snowdrops** (*Galanthus* spp.) – they often emerge in late winter, even in the snow! They typically appear by February, sometimes even earlier. Although the nodding white flowers may look delicate, these tough beauties can actually push through snow and ice to bloom.



Collaborative Research Project with Bartlett Tree Research Laboratories

Grounds For Sculpture has partnered with [Bartlett Tree Research Laboratories](#) to conduct a research study here in the gardens. You'll find the research plot in the Meadow, directly behind *The Awakening*. The study is investigating the efficacy of various treatments in preventing winter injury in spotted laurel (*Aucuba japonica* 'Variegata'). The opportunity for GFS to participate in horticultural research is an exciting one and aids in our goal of moving toward Level III arboretum accreditation status.



Prunus 'Pink Cascade'



Prunus 'First Lady'

Early Spring

Cherry blossoms are always a cheerful sign that spring has arrived! Two hybrid **flowering cherry trees** near the Lotus Pond were planted within the last several years and are a part of the memorial tree program here at GFS. *Prunus* 'Pink Cascade' has a dramatic weeping form, while *Prunus* 'First Lady' has an upright habit. Both specimens feature an abundance of showy, pink flowers.



Seward Johnson, *The Awakening*, 2014, aluminum, 204 x 840 x 360 inches, Collection of The Seward Johnson Atelier, © 2014, The Seward Johnson Atelier, Inc., photo: David Michael Howarth Photography



Upcoming 2026 Horticulture Educational Programming

Cat Swiderski | Manager of Horticulture



The Horticulture team offers educational programming throughout the year, including seasonal tours and hands-on workshops. Our horticulture tours are designed to highlight noteworthy aspects of the landscape and showcase special or unusual specimens from the living collection. The first tour of the year, **Winter Wonders in the Garden** (Wednesday, January 21 & Saturday, January 24), will explore the quiet beauty and unexpected highlights of the winter landscape. This will be followed by **First Signs of Spring** (Wednesday, March 18 & Saturday, March 21), a look at how the garden awakens as it transitions from winter to spring.



The year's first workshop is an exciting new offering, **From Tree to Table: Learn to Make Crab Apple Jelly** (Saturday, January 31). Director of Horticulture Janis Napoli will guide participants through the process of making jelly from crab apples harvested right here in our gardens.



The popular **Orchid Care** workshop returns in February with two sessions (Saturday, February 21 & Wednesday, February 25), one of my favorites to teach. Finally, Horticulturist Jen Mothes will debut a new workshop, **Growing Your Garden from Seed** (Saturday, March 14), which covers all the essentials of successful seed starting.

More details and registration information can be found on the [website calendar](#). Additional tours and workshops will continue throughout the year, so be sure to check the calendar– the Horticulture team is excited to share even more educational programming throughout 2026.

Header photo: David Michael Howarth Photography; Orchid Care photo: Miguel Marmolejos Fernandez

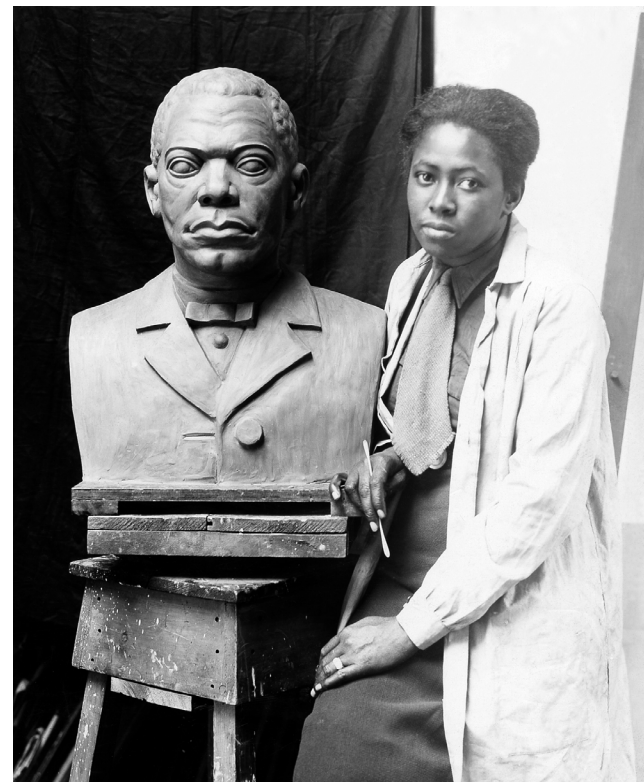
Unveiling the Hidden: Grounds For Sculpture Opens the “Vault”

Faith McClellan | Director of Collections & Exhibitions

This spring, Grounds For Sculpture invites visitors behind the scenes for a rare glimpse into its hidden treasures. *For the first time ever*, works long tucked away in storage will step into the light — including pieces by masters of American art and early creations from artists who once apprenticed at the Johnson Atelier before finding success in other fields.

Opening to the public on **May 17, 2026**, this collection-focused exhibition celebrates the depth and diversity of the GFS collection, uniting works across an array of mediums and stories. Among the possible highlights is **Luis Jimenez’s *Mesteño*** — a striking sculpture of fiberglass and steel last exhibited in 2012. After extensive conservation to preserve its delicate materials, *Mesteño* may return to view for a limited time, offering audiences a renewed look at this powerful work.

Visitors will also encounter a *never-before-seen* cast resin sculpture by the late, great **Selma Burke**, the pioneering sculptor whose portrait of Franklin Delano Roosevelt adorns the dime — though her authorship went uncredited for decades. Another highlight and recent acquisition, **Layo Bright’s *9:29. May 25, 2020. George Floyd Murder #147***, made from glass, wood, and sand, confronts the violence and grief of that day while memorializing a moment that ignited global calls for justice and change.



Selma Burke in her studio

Luis Jimenez, *Mesteño*, 1997, cast fiberglass resin, steel, Edition 2/5, 98 x 90 x 50 inches, Grounds For Sculpture, Gift of The Seward Johnson Atelier, photo: David W. Steele, © Luis A. Jimenez, Jr. Copyright Trust / Artists Rights Society (ARS) NY; Selma Burke in her studio, ca. 1935, Works Progress Administration, Federal Art Project; Pinchos Horn, photographer, Public domain

What makes this exhibition truly special, however, is not just *what* is being shown, but *who* helped bring it to life. Curated collaboratively by staff from the Guest Services, Development, Education, Membership, and Marketing departments — with guidance from the Curatorial team — this project opens the door for voices beyond the traditional curatorial circle. Inspired by groundbreaking initiatives at the Baltimore Museum of Art and the Phoenix Art Museum, the exhibition embodies Grounds For Sculpture’s commitment to inclusivity, collaboration, and shared creativity.

For participating staff, the process was a journey of discovery: not only did they witness how exhibitions come together, but they also *steered the process* — selecting works, shaping themes, designing the gallery, writing interpretive materials, and learning the intricacies of art handling and installation.

By widening the lens of curatorial practice, Grounds For Sculpture offers visitors a fresh way to experience its collection — through the eyes of those who live and breathe the institution every day. The result is an exhibition that surprises, inspires, and shines a light not only on extraordinary artworks but also on the talented team whose passion and perspective make GFS what it is.

As members you have first access to this exhibition through Member Preview Day on May 16, 2026!

Support is provided in part by The New Jersey State Council on the Arts, a division of the NJ Department of State, and a partner agency of the National Endowment for the Arts and the Atlantic Foundation.



Made possible by funds from the New Jersey State Council on the Arts, a partner agency of the National Endowment for the Arts.



Layo Bright, 9:29, May 25, 2020, George Floyd Murder #147

Celebrating Clifford Ward: *I’ll Make Me A World*

On January 11, *Clifford Ward: I’ll Make Me A World* reaches its closing day. With over fifty pieces made in his GFS studio, the show captured Ward’s incredible creativity, from his signature plaster bandage works to his stunning *Fluidity* sculptures that seemed to float in air. Clifford’s presence throughout the exhibition, greeting and engaging with visitors, made the experience all the more special. We’re deeply grateful to Clifford, Guest Curator Noah Smalls, and our partners at [Artworks Trenton](#) for helping us share this world of creativity and connection.

Clifford Ward: I’ll Make Me A World is made possible by generous exhibition support from Julie and Michael Nachamkin. Additional support is provided by the Brooke Barrie Art Fund, NRG Energy, and Marjorie Ogilvie. Support is provided in part by The New Jersey State Council on the Arts, a division of the NJ Department of State, and a partner agency of the National Endowment for the Arts and the Atlantic Foundation.



Made possible by funds from the New Jersey State Council on the Arts, a partner agency of the National Endowment for the Arts.



Layo Bright, 9:29, May 25, 2020, George Floyd Murder #147, 2025, blown glass, oak, sand, 28 x 13.5 x 13.5 inches, Grounds For Sculpture, Purchase, with Funds Provided in Part by Nigel Brown and Rishi Puri and Timothy Summers Bailey, photo: Courtesy of the Artist; Clifford Ward, *The Miracle of the Smiling Mom* 98, 2025, acrylic on canvas, 98 panels each 12 x 12 inches, Collection of the Artist, photo: David Michael Howarth Photography

Conserving *Leucantha* for All

Faith McClellan | Director of Collections & Exhibitions

Over the winter, *Leucantha*, the monumental sculpture by Philip Grausman installed in the pond near Rat's Restaurant, was carefully removed for conservation. Acquired for the collection in 1997, *Leucantha* is a defining example of Grausman's celebrated figurative style. This work in particular marks a pivotal moment in his artistic evolution: it was the first of his monumental portraits to be cast in metal, a decision that transformed both his process and the scale of his vision.

Though *Leucantha* originated from a smaller study of dancer Martha Clarke (now part of the National Portrait Gallery in Washington, D.C.), Grausman did not see these large-scale sculptures as portraits. Instead, he viewed them as landscapes, shaped by the same sense of vastness and rhythm that animates nature itself, or "an association expressed through a shared sense of scale," he once said.

Now, nearly two decades after its last treatment in 2007, *Leucantha* will undergo a year-long conservation project, supported in part by a grant from the National Endowment for the Arts. Over time, the sculpture's protective surface coating has weathered under sun, wind, water, and pollution—natural forces that eventually touch every outdoor artwork. This restoration will involve removing and replacing the deteriorated coating, ensuring the sculpture's brilliant surface and structural integrity are preserved for future generations.

The project will be led by the paint and patina experts of the [Johnson Atelier](#), whose deep knowledge of materials and conservation techniques makes them uniquely suited for the task. The team worked in consultation with Grausman himself during the sculpture's last restoration, and their continued involvement underscores the enduring relationship between artist, conservator, and institution.



While *Leucantha* is being restored, the GFS team will seize the opportunity to have the Johnson Atelier scan the sculpture and create a small-scale touchable model for visitors who are blind or have low vision. Developed in collaboration with regional accessibility partners—including the New Jersey Library for the Blind and the GFS Access Advisory Council—this model will support Touch Tours that invite all visitors to experience sculpture through the sense of touch. This initiative honors the vision of our founder, who imagined GFS as a place where art and nature could be felt in deeply personal and inclusive ways.

A video documenting the project will accompany these efforts, offering insight into the conservation process and the artistry behind *Leucantha*. The project is expected to be completed by December 2026, marking both a renewal of the sculpture itself and a reaffirmation of GFS's commitment to accessibility, preservation, and public engagement.

This project is supported in part by the National Endowment for the Arts.



Philip Grausman, *Leucantha*, 1993, aluminum, 108 x 118 x 118 inches, Grounds For Sculpture, Gift of The Seward Johnson Atelier, © Artist or Artist's Estate, photos : David Michael Howarth Photography

Grounds For Sculpture Announces Two New Leadership Appointments

On October 13, 2025, GFS welcomed two new colleagues to our leadership team: **Grace Yasumura** as Curator at Grounds For Sculpture and **Margaret Johnson** as the Managing Director at Johnson Atelier. With the addition of Yasumura to GFS and Johnson to Johnson Atelier, both organizations will expand their support of artists' ambitious next steps in their practice and connect artists and their practices with the public.



As Curator, **Yasumura** is responsible for elevating GFS's profile through exhibitions that encourage new understandings of exemplary works of sculpture while supporting works produced by contemporary artists. Prior to joining GFS, Yasumura served as an assistant curator at the Smithsonian American Art Museum, where she co-curated the exhibition *The Shape of Power: Stories of Race and American Sculpture*. She has also served as the project manager for *Contemporary Monuments to the Slave Past*, a digital archive that investigates how we visualize, interpret, and engage the histories of enslavement through contemporary monuments. Yasumura brings a deep understanding of public art and relevant contextualization thereof, enabling GFS to represent broader and expansive narratives through its exhibitions program.

Photos: Roshni Khatri



As Johnson Atelier's Managing Director, **Johnson** oversees all aspects of the organization's operations, from strategic planning, marketing and client engagement strategies, capability expansion, and business development initiatives aimed at expanding the Atelier's project pipeline and strengthening its position as a leader in art fabrication. She was most recently at Urban Art Projects (UAP), where she served as Principal and Senior Curator, leading North American curatorial teams while driving business development across diverse international markets spanning the US, China, Southeast Asia, and the Middle East. Johnson also developed UAP's esteemed foundry artist-in-residence program, working with acclaimed artists including Jeffrey Gibson, Sheila Pepe, Torkwase Dyson, and Lindy Lee. Prior to UAP, Johnson spent several years immersed in China's contemporary art scene, serving as Senior Curator at island6 Arts Center and Educational Coordinator at the Power Station of Art in Shanghai, where she led hands-on educational workshops around major international touring exhibitions, including *Andy Warhol: 15 Minutes Eternal*, the Centre Pompidou's *Surrealism & Beyond*, Cai Guo-Qiang's *The Ninth Wave*, and the 10th Shanghai Biennale. Originally from Georgia, Johnson's international experience has shaped her approach as both a storyteller and strategic relationship builder, bridging diverse audiences with powerful artistic experiences.



Tiffany Allen | Director of Education & Engagement



Raina Pahade, *I Can't be the Only One*

Members' Musings: Beneath the Surface

The 16th Annual Exhibition of artwork created exclusively by GFS Members is on view through February 22, 2026! This exhibition showcases the diversity of GFS membership through their varied artistic creations and unique inspirations.

This year's juror and curator is Danielle Davis, an educator dedicated to school and community art programs and visual artist with a background in metalworking and jewelry making.

Exhibiting artists include Melissa Antler, Victoire Batiste, Amy Benfer, Kay Chen, Richard Cleary, Eli Dock, Karen Fadool, Joy Kreves, Susan Lauricella, Charles Miller, Gene Mydlowski, Raina Pahade, Cynthia Pareja Dubin, Kathleen Pinder, Richard Rappleyea, Judi Turkheimer, and Linda Vonderschmidt-LaStella. [LEARN MORE](#)

The Education Gallery at Grounds For Sculpture is supported, in part, by Stark & Stark, Inc.

STARK & STARK PC



Check Out Our Art Adventure Backpacks!

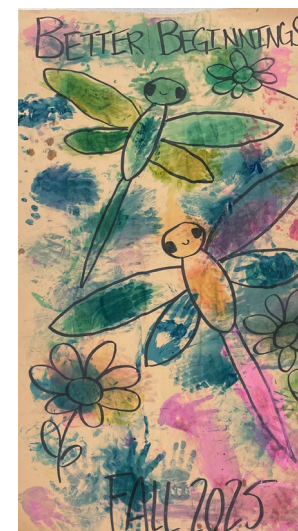
Art Adventure Backpacks are free of charge and made for families to bring on their journey through the gardens. Each activity inside is designed to encourage deeper engagement, whether it be with the GFS collection or with the nature surrounding it. Now available at the Guest Services Welcome Desk from 10AM-4PM!

Inside each backpack you will find: sensory toys, one pair of binoculars, a colored pencil kit, coloring pages, a clipboard with one Sculpture Hunt already attached, a folder with five "looking" activity sheets & a Sculpture Hunt answer key, a laminated activities ring with a cloud viewing activity & bird watching activity, and one cloud viewer!



The Closing of Between Shifts

Between Shifts, the Staff Exhibition at GFS, celebrated the creativity and dedication of the people who keep the sculpture park thriving behind the scenes. Featuring works across diverse mediums, the show highlighted the artistic voices of staff members who balance their professional roles with vibrant creative practices. The exhibition ended with a closing reception on October 30, 2025, where the artists and their family and friends gathered to recognize the collaborative and supportive community that defines GFS both on and off the clock.



Expanding Our Preschool Programming Partnerships

This year, we have expanded our offsite preschool programming to include two new partnerships with Princeton Nursery School and Better Beginnings. Museum Educators travel monthly to these sites to deliver engaging art projects that connect with the schools' curriculum and themes. Between the two schools, we are serving over 130 preschoolers each month from September 2025 through June 2026. Starting in January 2026, GFS will also

make monthly visits to Millhill's preschool classes. Artwork created by the students will be featured in a special exhibition at GFS in the spring!

Children's Programming at Grounds For Sculpture is made possible by generous support from the Jirair S. and Elizabeth Hovnanian Family Foundation. Additional support is provided by Knowledge Without Borders and PNC Foundation. Support is provided, in part, by Jenifer Morack and Schaefer/Batterman Family Fund of the Princeton Area Community Foundation.



Creating New Inclusive Programming with the Joshua Harr Shane Foundation

The Joshua Harr Shane Foundation has been connecting under resourced schools with GFS since 2019.

This year through two new grants we have been able to expand these programs. One grant is for Young Artist Experiences for visiting school groups and the other grant is for Creative Art Workshops for Adults with Intellectual and Developmental Disabilities that have transitioned out of the school system.

Young Artist Experiences are tailored to fit the needs of the students and vary each year with some programs being offered on a repeated basis but with modified projects that build upon the skills gained from the year before.

The Creative Art Workshops program, which was successfully piloted in 2025, is specifically designed for adults with Intellectual & Developmental Disabilities (IDD). With the limited opportunities for engaging activities for adults over 21, this program aims to provide enriching experiences.

To learn more about opportunities for Young Artist Experiences, contact Caroline Fazzini at cfazzini@groundsforsculpture.org.

Sign up for Creative Art Workshops for Adults with IDD on the [GFS website](#).

Creative Art Workshops for Adults with IDD and Young Artist Experiences for Schools at Grounds For Sculpture are supported, in part, by the Joshua Harr Shane Foundation.

Trenton Area Stakeholders Meeting

The Trenton Area Stakeholders (TAS) are a network of diverse local community leaders dedicated to strengthening the Greater Trenton area for youth and families. GFS is proud to be a part of this network and hosted the October gathering. The morning began with a meet and greet followed by inspiring opening remarks from TAS Facilitator Karen Andrade Mims, CEO Emeritus of The Father Center, reaffirming the group's mission to foster collaboration and dialogue across organizations that serve the community. Tiffany Allen, GFS Director of Education and Engagement, then extended a gracious welcome to attendees, emphasizing the commitment GFS has to creativity, education, and community connection.

The highlight of the morning was a presentation led by Faith McClellan, GFS Director of Collections and Exhibitions, featuring the indoor mural, *Raíces & Resistencias* by Salvador Jiménez-Flores. Following the presentation attendees went on a tour to see two newly acquired outdoor sculptures by Jiménez-Flores. Participants were deeply moved by the themes of cultural identity and resilience expressed through the art. They then returned to the East Gallery to engage in a hands-on mixed media art activity inspired by the exhibition, facilitated by GFS Museum Educator Shawn Allen-Dela Rosa, encouraging self-reflection on identity and a closer look into our connection with symbols as a form of expression. The meeting concluded with networking, door prizes, and closing remarks. This event beautifully captured TAS's spirit of open sharing and collective action, leaving participants energized and united in their efforts to strengthen our local community.

New Jersey Creative Communities Conference: The Art of Community Well-Being

On November 6, GFS had the pleasure of presenting at the New Jersey Creative Communities Conference. GFS Manager of Wellness, Rodney Camarce, and Director of Guest Services, Sam Hwang, led participants in a workshop entitled *Art, Healing, and Creating Connections*, that highlighted Grounds For Sculpture's initiatives (mindfulness and nature walks) and programs (tai chi, yoga, and herbalism) that support holistic well-being. The session also reflected on the 2025 pilot year of the Prescription to Arts, Nature and Wellbeing program, a collaboration with Penn Medicine Princeton Health, where doctors prescribed a 90-day museum pass to patients that encouraged art-and-nature visits to GFS designed to promote wellness and healing.



GFS Director of Guest Services, Sam Hwang, and GFS Manager of Wellness, Rodney Camarce



GFS's Culture of Generosity

Thanks to an incredibly generous anonymous donor, we were able to install pavers and create a beautiful path around the pond, the Van Gogh Café terrace, and the Member Lounge. We are so appreciative of this gift that helped us make a better and more accessible experience for all visitors.



Philly Touch Tours Collaboration

On October 14, GFS staff from all departments participated in touch tour training in collaboration with Philly Touch Tours. Touch tours are an accessible way for guests who are blind or have low-vision to experience a docent tour or exhibit at GFS. We started the day with cultural competency training, heard stories from museum goers who are blind, and then explored the sculptures while learning best practices for giving tours.

Touch tours are available with two weeks' advance notice. Reach out to access@groundsforsculpture.org to schedule.

The Prescription to Arts, Nature and Wellbeing at GFS

As the next step in the expansion of our Wellness Initiative, in 2025, GFS piloted a social prescribing program. Social prescription is the practice of prescribing a museum (park, etc.) experience for a patient's health. There is growing evidence about the physiological benefits and improved patient outcomes derived from encounters with culture and nature, such as reduced stress and anxiety, faster healing, enhanced mood, and improved sleep. Studies have identified the underlying impact of these activities on mental health, including increased social connectedness, heightened self-esteem, increased patient activation, greater optimism, and improvement in health-related behaviors across a range of groups including music, exercise, and arts groups.

GFS's program addresses community needs including access to a safe space to move, breathe, and interact with nature and art with an intention to increase physical mobility and activity, confidence, and each participant's overall wellbeing. This year we partnered with Penn Medicine Princeton Health to develop our Social Prescription Initiative and work with physicians and healthcare professionals to prescribe 90-day prescriptions (for each patient and a guest) with activity prompts and a map of GFS highlighting specific locations, targeting audiences within bariatrics, mental health, pediatrics, and primary care.

In 2026, GFS will expand this program with Robert Wood Johnson University Hospital, Hamilton, joining as a second healthcare partner to work with patients identified through support groups or flagged by Community Health Workers to prescribe 90-day prescriptions to visit GFS and take up to three classes (including tai chi, yoga, wellness walks, and horticultural programming) during the prescribed period.

The Prescription to Arts, Nature and Wellbeing at GFS – A Social Prescribing Program Pilot at Grounds For Sculpture, in partnership with Penn Medicine Princeton Health and Robert Wood Johnson University Hospital, Hamilton, is supported, in part, by The Horizon Foundation for New Jersey.



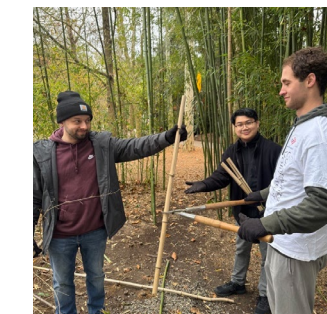
Credit Union of New Jersey

Business Member Volunteering

In the Fall we welcomed Bank of America, the Credit Union of New Jersey, DELIS Landscaping, Greencrown Energy, and NRG to volunteer with our Horticulture Department. Groups worked hard cutting down bamboo, pulling weeds, and more to assist the team.

So much more than a morning out of the office, corporate volunteer groups are able to spend time in the gardens, assist on impactful projects and learn more about GFS during their visit. One participant applied the following day to volunteer on a regular basis!

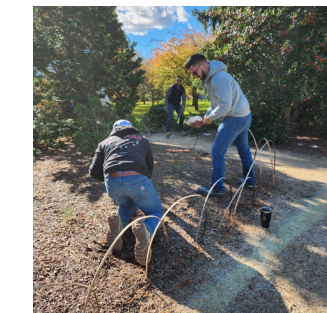
Business Members receive a variety of benefits and discounts for their company and/or their employees based on their level of membership. They also support access to GFS through the Families First Discovery Pass program. Residents who receive benefits through SNAP, WFNJ, Child Care Subsidy and/or WIC are eligible for up to 6 daytime general admission tickets per visit at GFS. In 2025 Business Members have supported 695 tickets through this program.



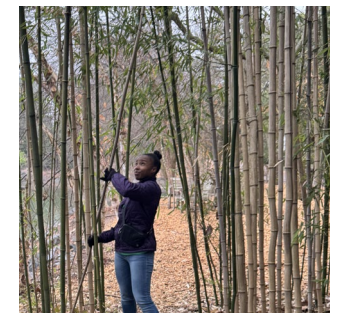
Bank of America



DELIS Landscaping



Greencrown Energy



NRG

The Families First Discovery Pass Program at Grounds For Sculpture is supported, in part, by Barbara and Gerald Essig, M & T Charitable Foundation, and Grounds For Sculpture Business Members.

To find out more about the Business Member program and how it may fit your organization's needs, visit <https://www.groundsforsculpture.org/membership/business-membership/>.



Artwork by Volunteers & Docents

Melissa Kelly | Manager of Volunteer Services

Volunteers at GFS are engaged in every aspect of our operations. They spend countless hours diligently working in the gardens, leading tours and discussing our collection, and supporting our staff in so many ways. For some, volunteering is a meaningful second act; for others, it offers a peaceful respite from their busy, hectic lives. And for many, it's simply their "happy place." We wanted to take a moment to reflect on this wonderful team and highlight their incredible artistic talents. Like so many of our visitors and members, our volunteers find joy and inspiration in the art and natural beauty that surrounds them here.

Interested in volunteering at GFS? Volunteers play a vital role in all facets of our operation and create a warm and friendly atmosphere for our visitors. Grounds For Sculpture offers a range of volunteer opportunities for people with a variety of interests, schedules, and skills. [LEARN MORE](#)

Marlene Porter

Watercolor (photo above)

This watercolor painting was done in my journal as a park guide. I enjoyed watching the two visitors looking into the pond.



Adria Sherman, *Linden Tree 2.0*

Adria Sherman

Linden Tree 2.0

Cotton, silk

When I started working as a park guide, Isaac Witkin's *Linden Tree* captured my attention. I studied it very closely, was fascinated by the forms he created, and photographed it from many angles. About a year later, during a color mixing course on paper, I made a collage of my painted papers based on my photos and reactions to Witkin's work. My collage was photoshopped to replicate the design and then printed on cotton fabric. Then, I silkscreened another impression of *Linden Tree* onto silk organza and stitched it onto the cotton piece.

Jeffrey Sayre

Down and Out

Photography

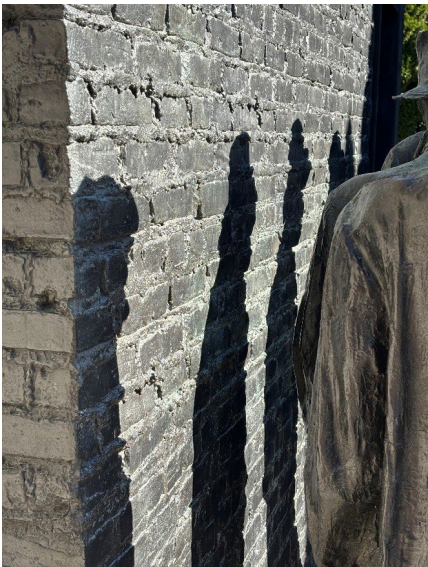
Decades ago, I became seriously involved with nature photography. Not only have I enjoyed finding and capturing the remarkable beauty of nature, but have also found great joy in sharing it with others. Over the years, I have had nine solo exhibits, plus participated in numerous shared exhibits and competitions on a regional, national, and even international basis.

Audrey Roth

Branching Out

Pastel

How volunteering at Grounds For Sculpture does inspire me! The following image is based on my walks as a park guide and how settings and horticulture combine to move me to create. The maple allée and its graceful lineup of trees moves me in every changing season.



Jeffrey Sayre, *Down and Out*



Audrey Roth, *Branching Out*



Xiao Hua Wang, *Rhythm of the Garden*

Xiao Hua Wang

Rhythm of the Garden

Acrylic on canvas

These 4 pieces of my paintings are inspired by the nature of GFS - the beauty of integrating the landscape with sculptures all year round - spring, summer, autumn and winter. I named the piece *Rhythm of the Garden* (it is actually 4 pieces, but I photographed them together).

Get to Know Our Guest Services Staff

Lael Hochberg,
Park Attendant

How long have you been at GFS?

3 years

What is your favorite sculpture/garden feature?

The Monet Bridge

If you were a sculpture, what would your title be?

The Wanderer

Favorite Fun Fact/Hobby

I practice traditional art and speak Japanese.



Masha Zhdanova,
Visitor Assistant

How long have you been at GFS?

About a year and a half now

What is your favorite sculpture/garden feature?

The rose archway is my favorite garden feature and my favorite sculpture is *Giant George* by Gordon Gund!

If you were a sculpture, what would your title be?

Pondering The Benefits of A Fancy Iced Tea

Favorite Fun Fact/Hobby

I like to make comics in my spare time!



Ro Robertson,
Visitor Assistant

How long have you been at GFS?

1 year and 10 months (almost 2 years!!)

What is your favorite sculpture/garden feature?

Centaur by Nina Levy

How did you get your name?

I really had to search for my name through a lot of self-exploration and experimentation with help from my friends until I found one that fit me. Also, I am a *Star Trek Next Generation* fan and I liked Ensign Ro Laren very much.

Favorite Fun Fact/Hobby

I was a gymnast for 15 years and now I train in martial arts!



Nicole Lockett,
Visitor Assistant

How long have you been at GFS?

Eight years in May

What is your favorite sculpture/garden feature?

October Gathering by Joan Danziger, Dana by Curt Brill, and Centaur by Nina Levy

How did you get your name?

I'm named after my Uncle Nick.

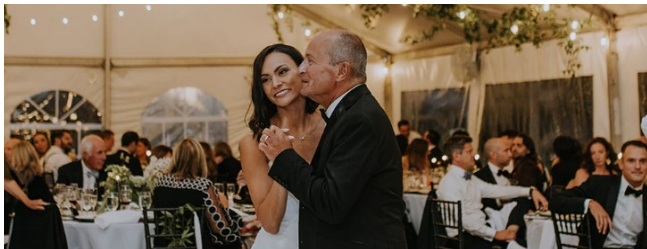
Favorite Fun Fact/Hobby

I love spiders, horror movies, live music, and collecting local art.



GFS EVENTS AT A GLANCE

Approximately 150 events were booked for 2025 serving over 11,000 guests! Around 45 weddings took place at GFS - some wedding clients have their first date, engagement, wedding ceremony and/or reception here. We even run into wedding clients in the sculpture park touring the property with their kids and family for years to follow.



Book your next party, private gathering, or corporate retreat at Grounds For Sculpture!

From April through early November, enjoy our [Domestic Arts Tent](#), which can accommodate events as large as 300 guests, and offers a peaceful ambience near the scenic Water Garden. For more information, fill out our inquiry form at www.groundsforsculpture.org/plan-an-event.

MEMBER DISCOUNTS AT GFS

Members enjoy 10% off on all merchandise in the Museum Shop and 10% off dining at the Van Gogh Café, Peacock Café, and Rat's Restaurant (parties up to 8). The discount also applies to Rat's special themed dinners, cooking classes, and comedy nights! Be sure to note "GFS Member" when making your reservation, and plan to show your valid eMembership card to your server.

VIEW RAT'S SEASONAL MENU & EVENTS: ratsrestaurant.com/



Museum Shop photo: Hannah Yoon

Rooting for You: Trees of Grounds For Sculpture

N D P G I X Z A A D T G Z L S E C D A R A U W V I
C P H Z F L I J W B A J F I R G N Y N L T T K T Q
D D B K Y Z X W Z P F O F P S L C P P R K C T H O
W S D P H G H T C M V E C M U M B E M R K D Y I J
L N U R K A B N N H T G F W M K J N D W E J A T C
K Q B C R C V F F W X A X Q S B J V K A J S I L H
Z M T N F C I R Z C V G V Y G R B B W R R G S N Z
N Q E T Z Q S F A L S E C Y P R E S S K C S R O R
O R S F L F F Y B M Q A G R H W E E F M W M B N F
P C X B E H F Q I A T G Y R I S C R J U K L P P S
H N P C Q G M G A P N K M W X Y H D J R H B N P G
S A R L L K H I B L E C R A B A P P L E M W N R D
F W Z A A A P T C E L P T H S N C E K E C A I W X
V H E O K J R J R E M J T Q A G B E A B J A X T R
J B W E W A J C V E P H C S F Y K E Z R C O C R W
W B F T T W T Z H M D B C H B C R I H B K H X L B
X V Z P Y G U S Z X K W R G O B K P A B T N C B W
T M T N Q W U X U Q R L O E G R E Q O T U Y C L B
Y C G B O R Q M S R V H Y O D K N T A H A R X H G
S Z I Y B D A Z N O A P O O D B K B K H D C I Z S
M J N J M C O D Y L T I E H X W U E E M Y R T L E
L O G B U C K E Y E H J F B A G Z D B A X F I I J
S N K I K R E N E P M K Y M Z T C T H J M Z I C B
G C O J J R X K P J Z B A F N F D E Y Z I C X S Z
K X U N Y V Q X P I M K F G I M Q U A S H I K U U

FALSECYPRESS
SWEETGUM
CYPRESS
MYRTLE
BEECH
FIR

CRABAPPLE
BUCKEYE
REDWOOD
REDBUD
ELM
LARCH

HORNBEAM
KATSURA
GINGKO
CEDAR
MAPLE
OAK



WHAT GFS STAFF AND VOLUNTEERS ARE READING:

Art Cure: The Science of How the Arts Save Lives by Daisy Fancourt

Paved Paradise: How Parking Explains the World by Henry Grabar

The Brain at Rest – How the Art and Science of Doing Nothing Can Improve Your Life by Joseph Jebelli

The Lost Art of Doing Nothing: How the Dutch Unwind with Niksen by Maartje Willems

David Michael Howarth Photography