

# What is Grounds For Sculpture?



Grounds For Sculpture. Photo: David W. Steele

Grounds For Sculpture is a 42-acre sculpture garden, museum, and arboretum founded on the site of the former New Jersey State Fairgrounds.



Grounds For Sculpture presents over 270 contemporary sculptures. During your visit, you will see original artwork by artists from all over the world including many from New Jersey and Philadelphia.



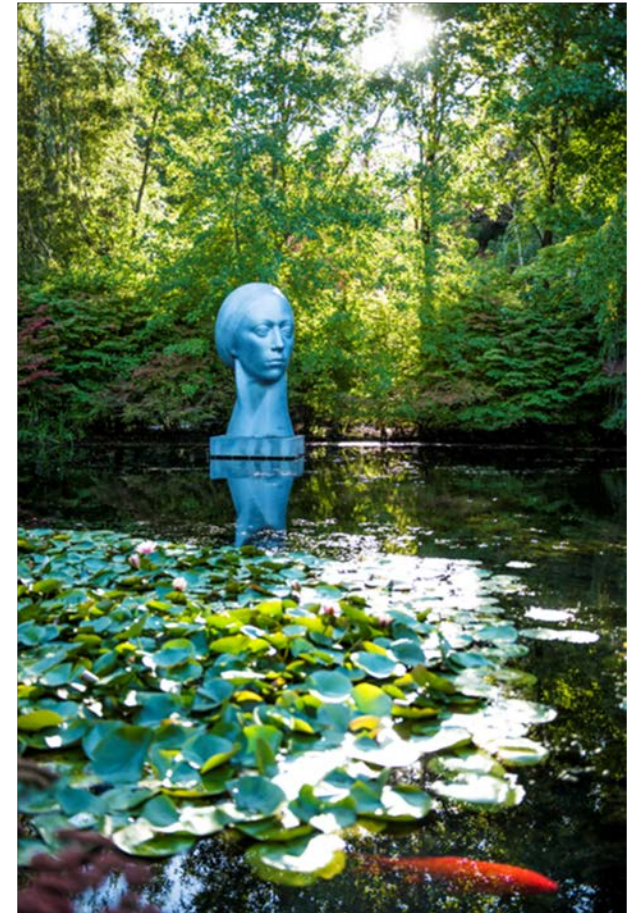
Dina Wind, *Harp of David #1* (1985/2018), steel, 26 x 24 x 22 feet, Grounds For Sculpture, Gift of the Dina Wind Art Foundation. Photo: David W. Steele

Artwork at Grounds For Sculpture is displayed in indoor galleries and throughout our garden.



Masayuki Koorida, *Black Light*, 2015, granite, 62.99 x 71.65 x 64.36 inches, Collection of the Artist. Photo: David Howarth

Masayuki Koorida, *Heart*, 2017, granite, 43.7 x 102.36 x 79.5 inches, Collection of the Artist



(Right) Philip Grausman, *Leucantha*, 1993, aluminum, edition 1/3, 108 x 118 x 118 inches, Grounds For Sculpture, Gift of The Seward Johnson Atelier



Sculptures created by Grounds For Sculpture's founder Seward Johnson can be found throughout the gardens. Seward Johnson was born in New Jersey and is famous worldwide for his life-size bronze figurative sculptures. In 2014 he was added to the New Jersey Hall of Fame.



Seward Johnson, *Copyright Violation!*, 2004, bronze, aluminum, edition 2/8, 72 x 64 x 55 inches, Grounds For Sculpture, Gift of The Seward Johnson Atelier, ©2003, The Seward Johnson Atelier. Photo: David W. Steele

Keep an eye out as you travel to Grounds For Sculpture.  
You might see one of Johnson's artworks on your way.

Our grounds are also full of thousands of thoughtfully planted, cared for, and displayed trees and flowers.





# During your visit



Itzik Benshalom, *First Love*, 2006,  
bronze, edition 1/9, 17 x 5 x 4 feet,  
Grounds For Sculpture,  
Gift of The Seward Johnson Atelier

There are different ways to experience Grounds For Sculpture. Your group may choose to self-guide with your teacher or family or to take a tour with one of our docents. A docent is a guide who shares information about the art on view.

Regardless of how you experience Grounds For Sculpture, remember that your ideas matter and to share your thoughts and questions about the art and garden with your guide and your group.



Larry Young, *Pegasus and Bellerophon*, 1990-91 (detail), bronze, edition 1/3, 102 x 68 x 103 inches, Grounds For Sculpture, Gift of The Seward Johnson Atelier, Original Gift of Mrs. Art Firley. Photo: Zach Teris



You are invited to touch select outdoor sculptures to learn about their surface and material.  
Remember that all sculptures are original artworks and should be touched gently.



Boaz Vaadia, *Ammi'el & Amaryahu*, 1999  
bronze, bluestone, edition 5/5, 70 x 100 x 72 inches,  
Private Collection of Rebecca Vaadia and Sara Vaadia, ©1999, Boaz Vaadia Ltd. Photo: David Howarth

Sculptures are not designed to be climbed. For your safety and to protect the artwork, climbing sculptures is never allowed.



Grounds For Sculpture has a lot of land to explore.  
It is important that students and kids stay with an adult at all times.  
If you get separated from your group, look for one our guest services staff  
and they will help you locate your group.



You may also see peacocks and other wildlife during your visit.

Please maintain a safe distance from the peacocks and other wildlife. Touching peacocks and wildlife may cause the animal harm or place your personal safety at risk.



Photo: David W. Steele



Grounds For Sculpture welcomes more than 261,000 visitors a year. Remember to be mindful of other visitors and move through the galleries and grounds with your group in a respectful manner.



We hope you enjoy your visit and to see you again soon!